

Recent Urban Development in Tokyo

Sayaka Fujii

Associate Professor, University of Tsukuba

Contact

- Sayaka Fujii
 - fujii@sk.tsukuba.ac.jp
 - Associate Professor
 - Division of Policy and Planning Sciences
 - Faculty of Engineering, Information and Systems
 - University of Tsukuba, Japan

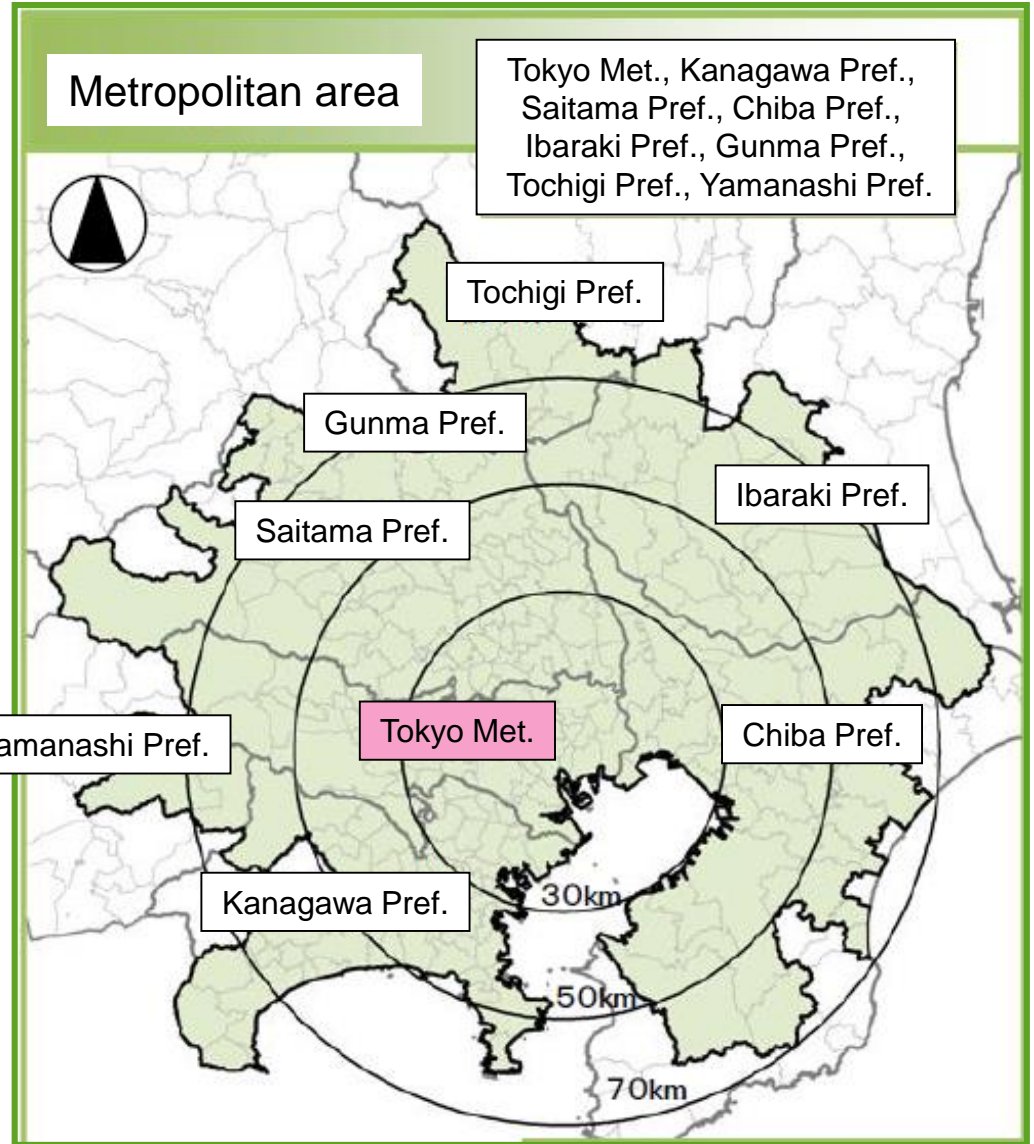


Contents

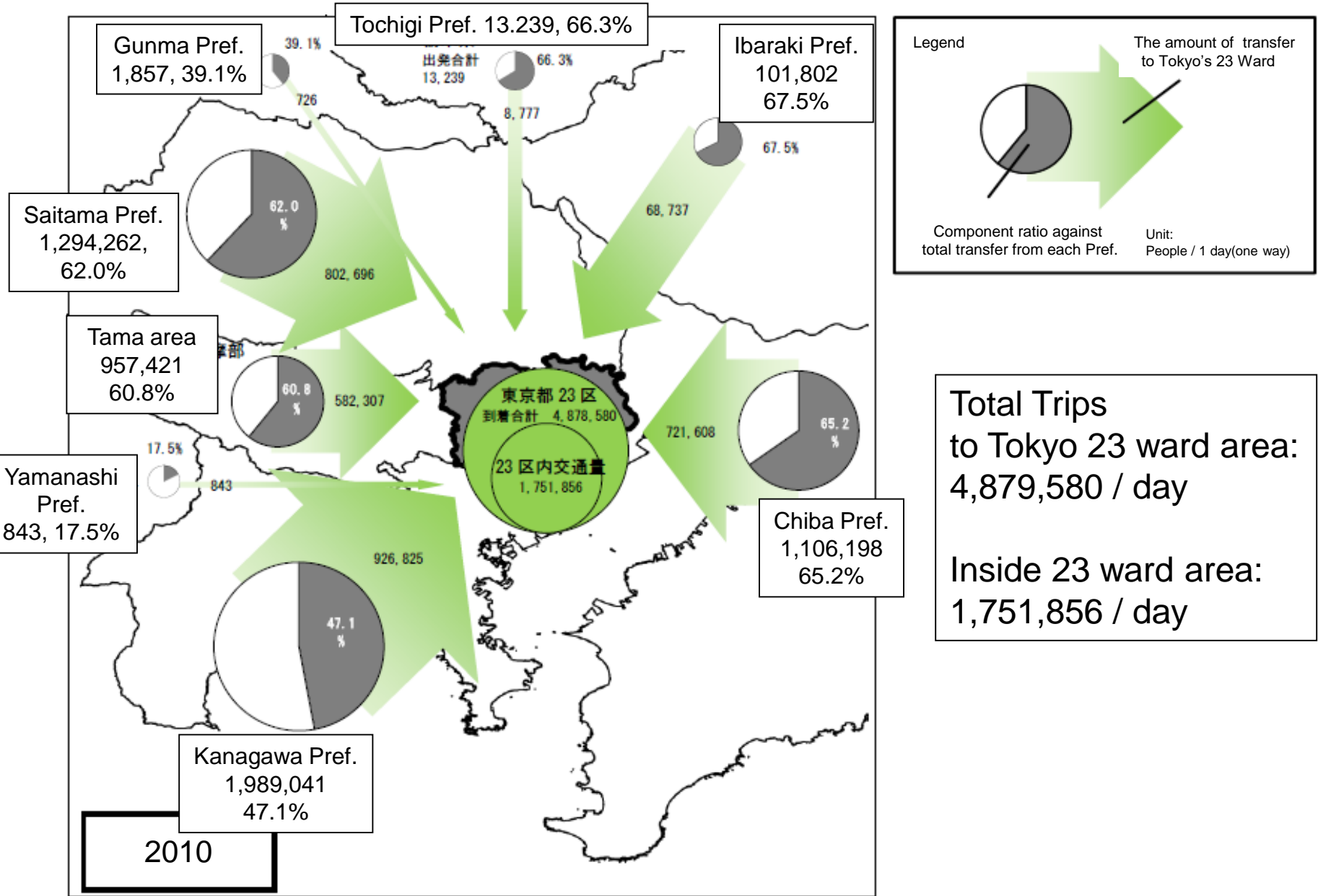
- **Urban Structure of Tokyo**
 - Location and Metropolitan area
 - Urban Zones in Tokyo

- **Urban Issues of Tokyo**
 - Aging and Shrinking population
 - Disaster Prevention
 - International Competition & Olympic Game 2020
 - Energy and Environment

Location of Tokyo



Urban Structure of Tokyo

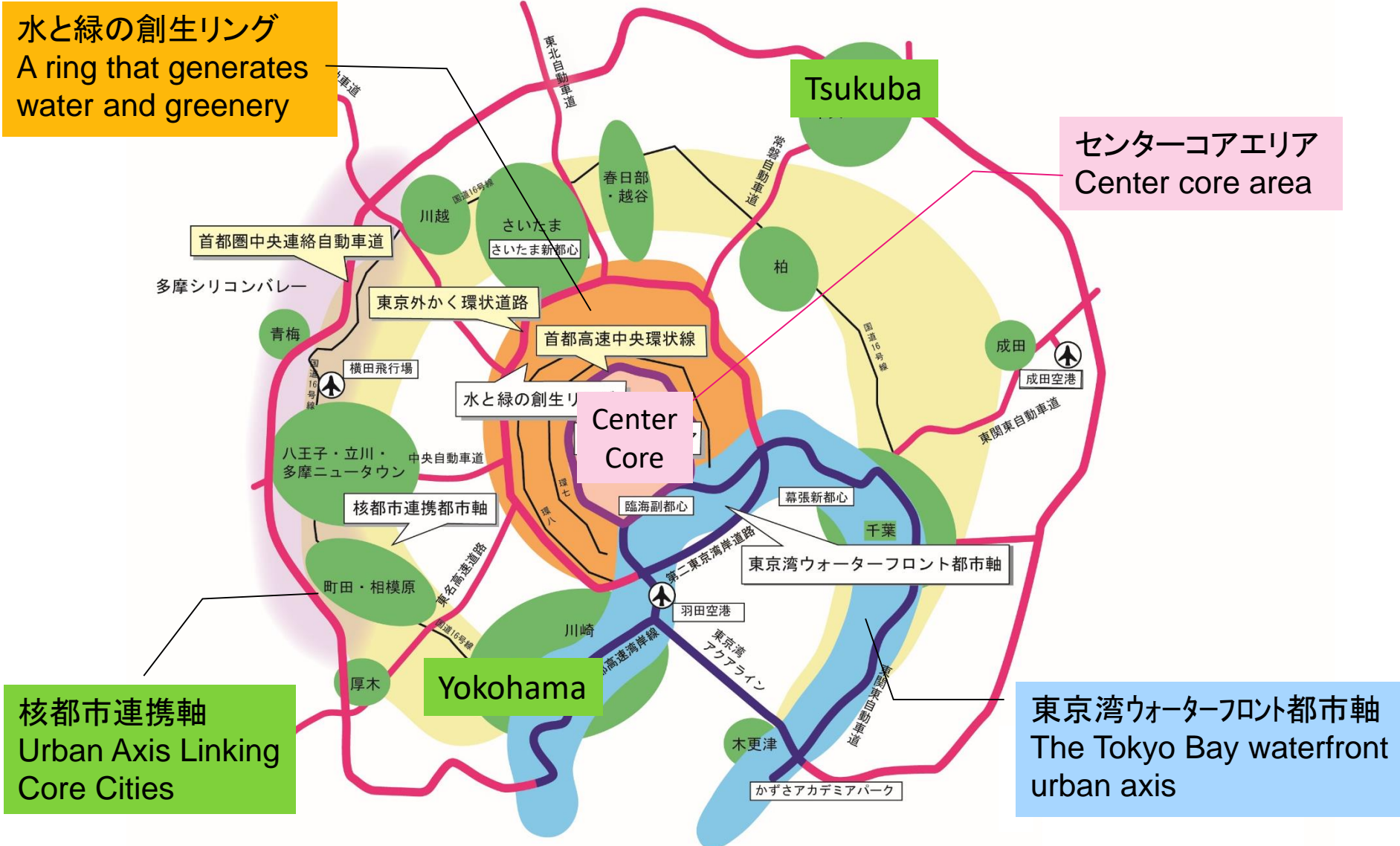


Total Trips to Tokyo 23 ward area: 4,879,580 / day

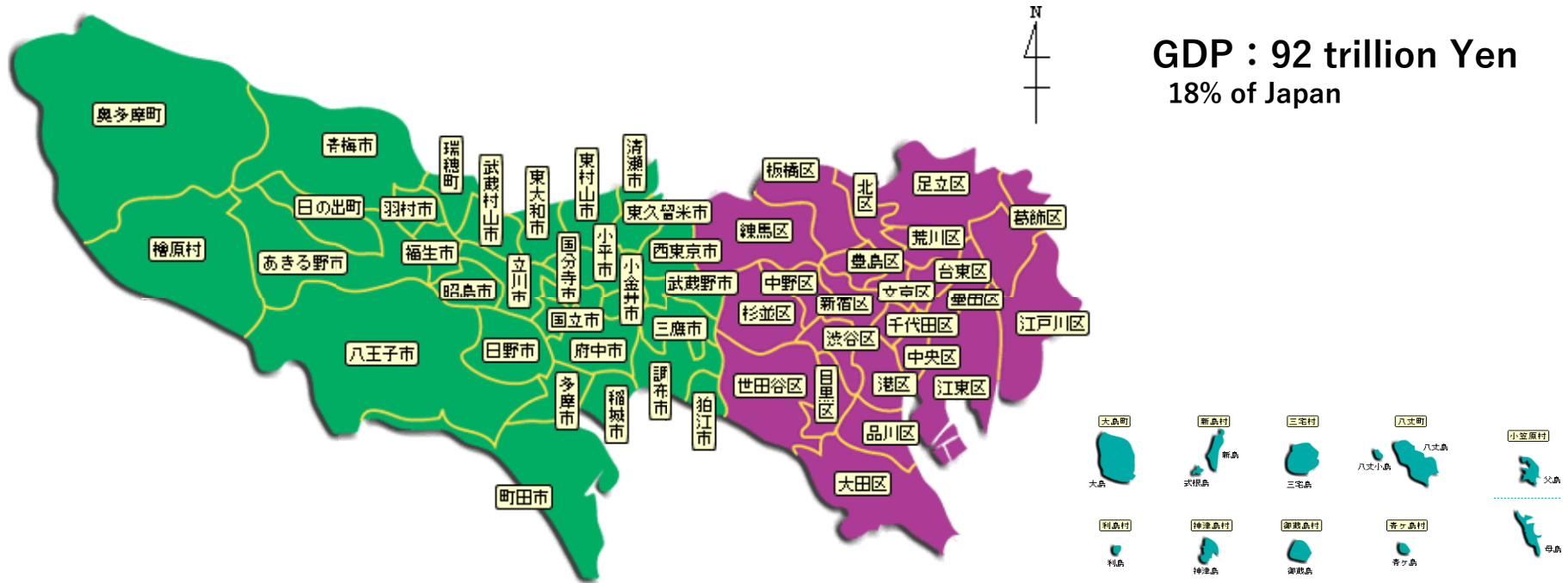
Inside 23 ward area: 1,751,856 / day

Urban Structure of Tokyo

“Circular Megalopolis Structure” 環状メガロポリス構造



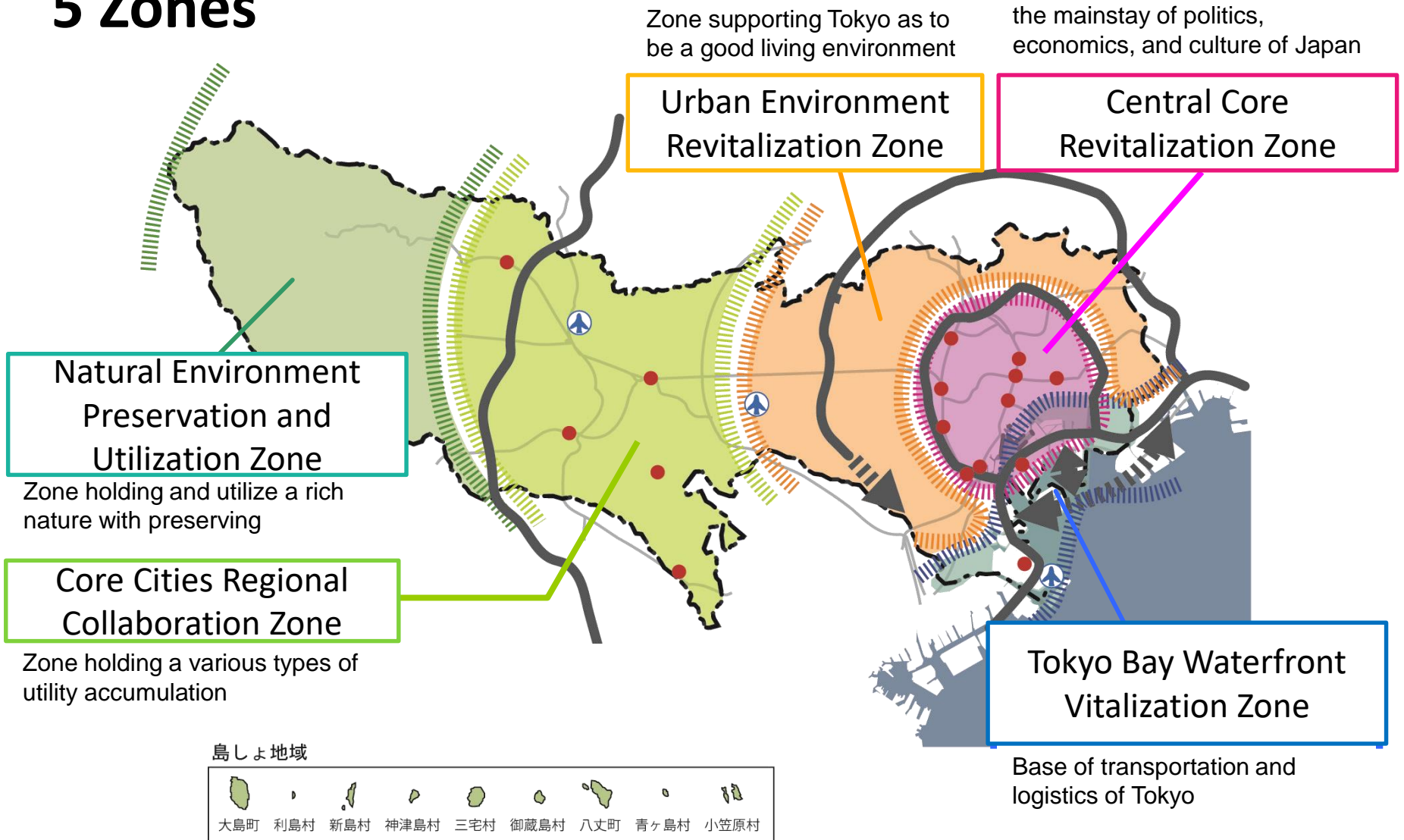
Administrative Areas of Tokyo Met.



	Area (km ²)	Population	Density (persons/km ²)
23 Special wards	617	8,950,000	14,498
26 cities, 3 towns and 1 village in Tama area	1,160	4,190,000	3,608
2 towns and 7 villages in islands	401	27,815	69
Total	2,178 0.6% of Japan	13,160,000 10% of Japan	6,042

Urban Development Strategies by 5 Zones

5 Zones



Urban Development Strategies by 5 Zones

Central Core Revitalization Zone

- strengthening of functions of international business center



- implementation of environmentally-friendly urban development
- creation of the urban spaces surrounded by forests and waterfront
- creation of the urban spaces with its history and culture
- implementation of urban residence for enjoyment of urban life

Urban Development Strategies by 5 Zones

Tokyo Bay Waterfront Vitalization Zone

○enhancement A Window on the World as an international city Tokyo



- interaction among Asia and world countries
- implementation of environmentally symbiotic urban development
- developing accessible water front areas as “Waterfront Capital”

Urban Development Strategies by 5 Zones

Urban Environment Revitalization Zone

- development of Compact City
- promoting greenery to coincide with urban development
- formation of verdant and affluent landscape
- development of affluent residential environment
- improvement of the safety and residential environment

Core Cities Regional Collaboration Zone

- building to leading spot to develop Tama as a Vibrant city
- promotion of Establishment of New Industrial Facilities
- conservation and utilization of Green space and Farmland
- development of High quality and deliberate residential area

Natural Environment Preservation & Utilization Zone

- establishing recreational zones with rich nature across Tokyo



11

- revival of the beautiful forest with softwood and hardwood

【Ogasawara islands (World Heritage by UNESCO)】

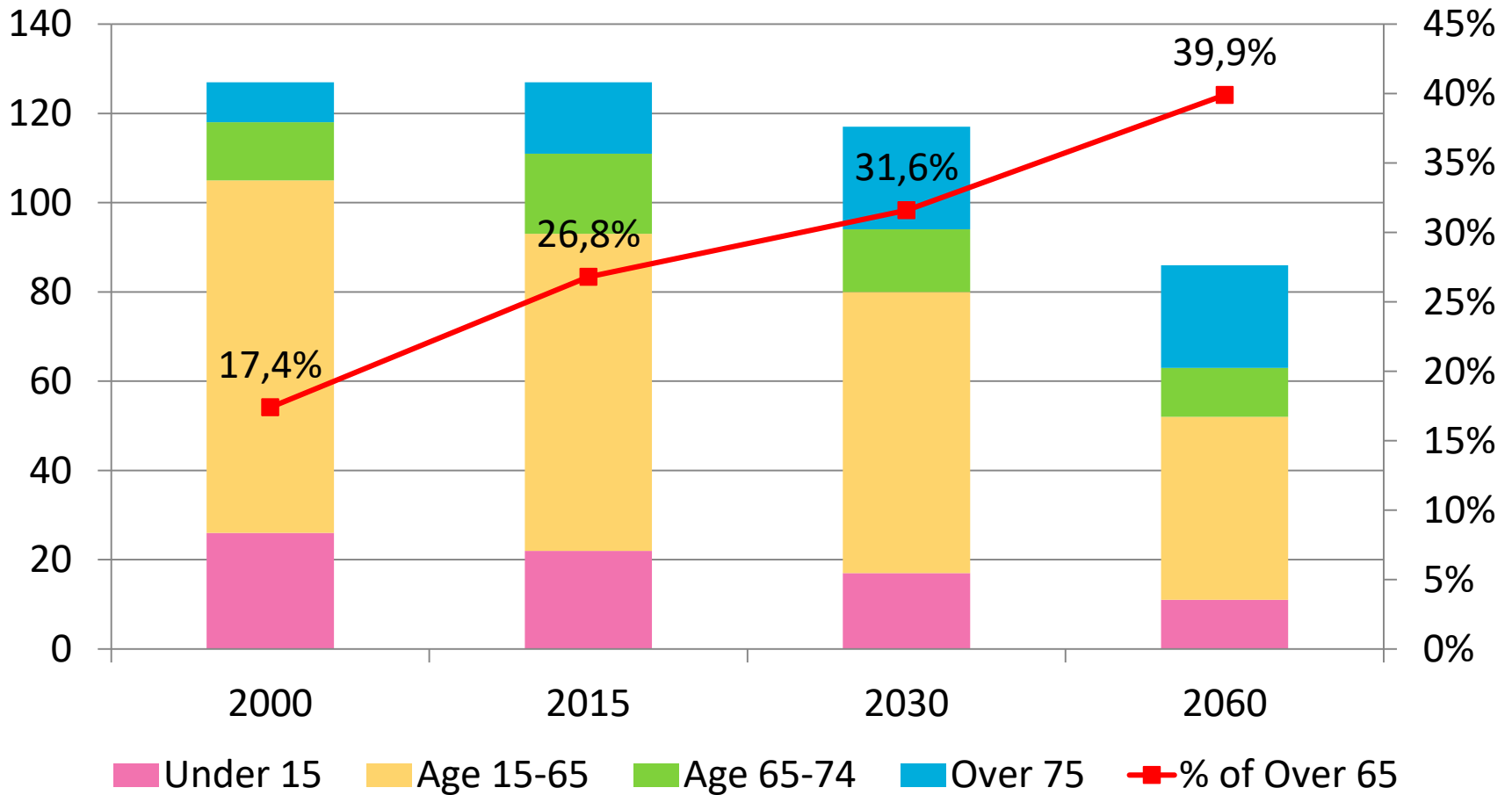
Urban Issues in Tokyo

- **Aging and Shrinking population**
- **Disaster Prevention**
- **International Competition & Olympic Game 2020**
- **Energy and Environment**

Aging and Shrinking population

Population of Japan

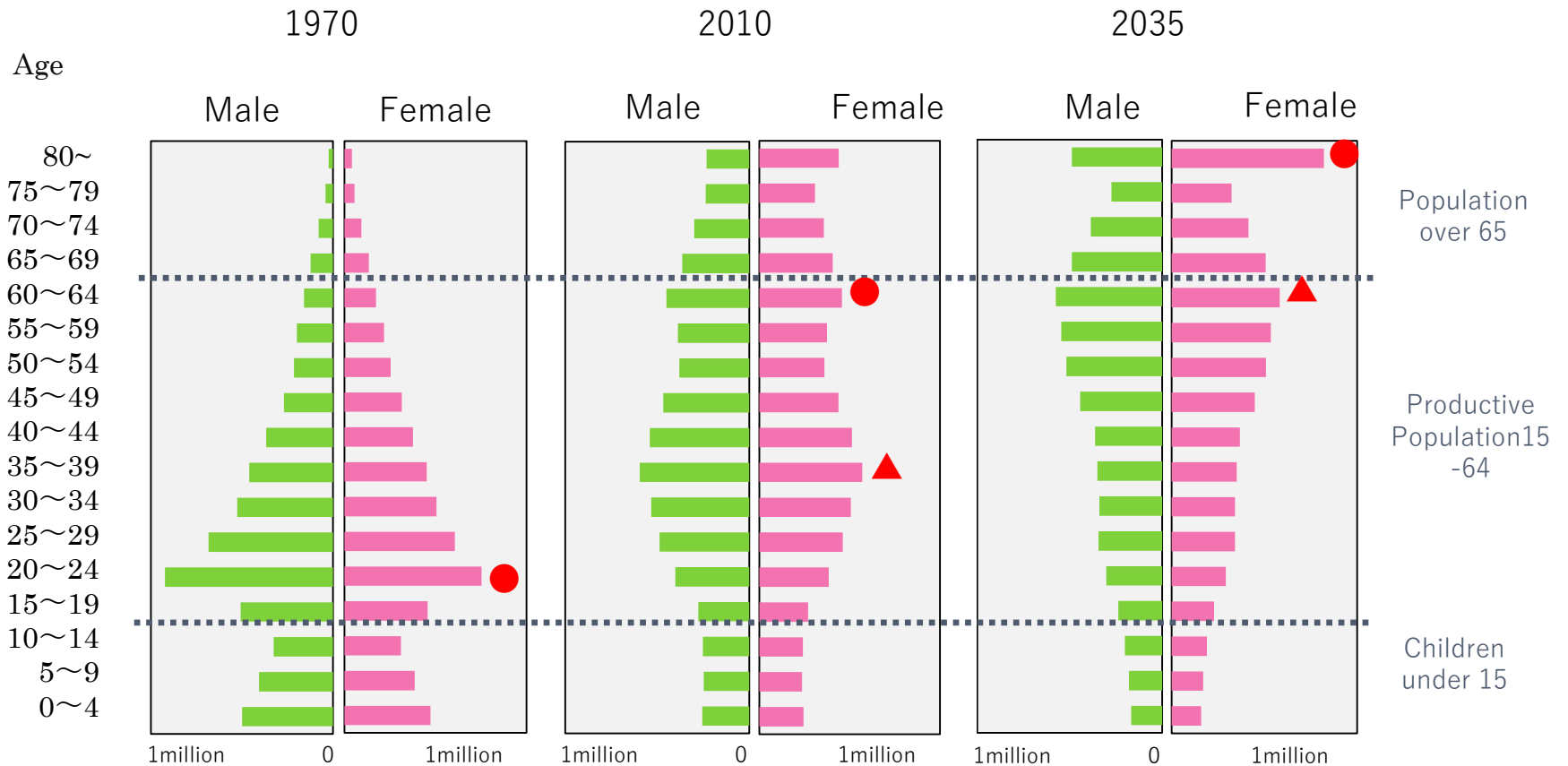
In millions



Aging and Shrinking population

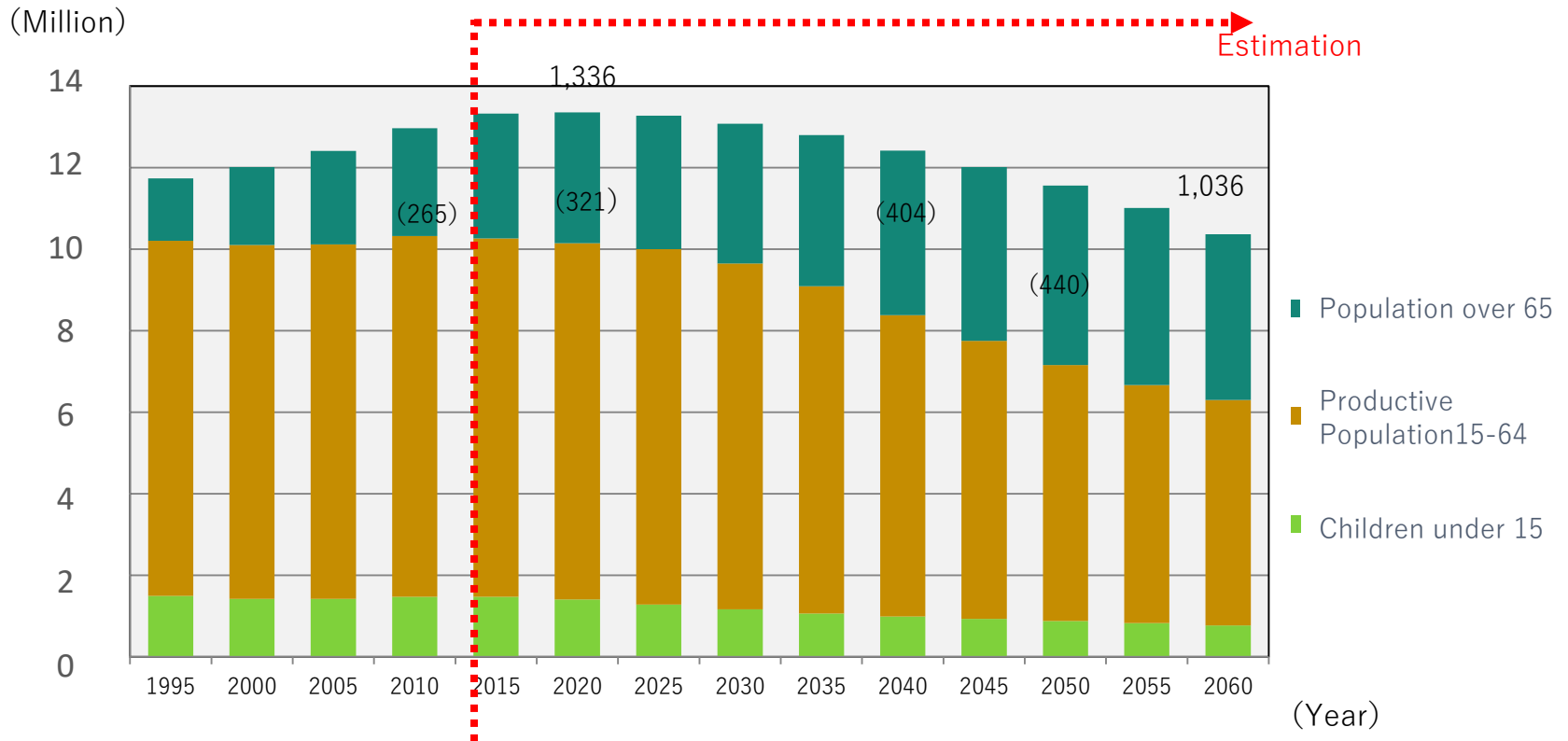
Population of Tokyo

●:Baby-boom generation
▲:Children of Baby-boom generation



Aging and Shrinking population

Population Estimation of Tokyo

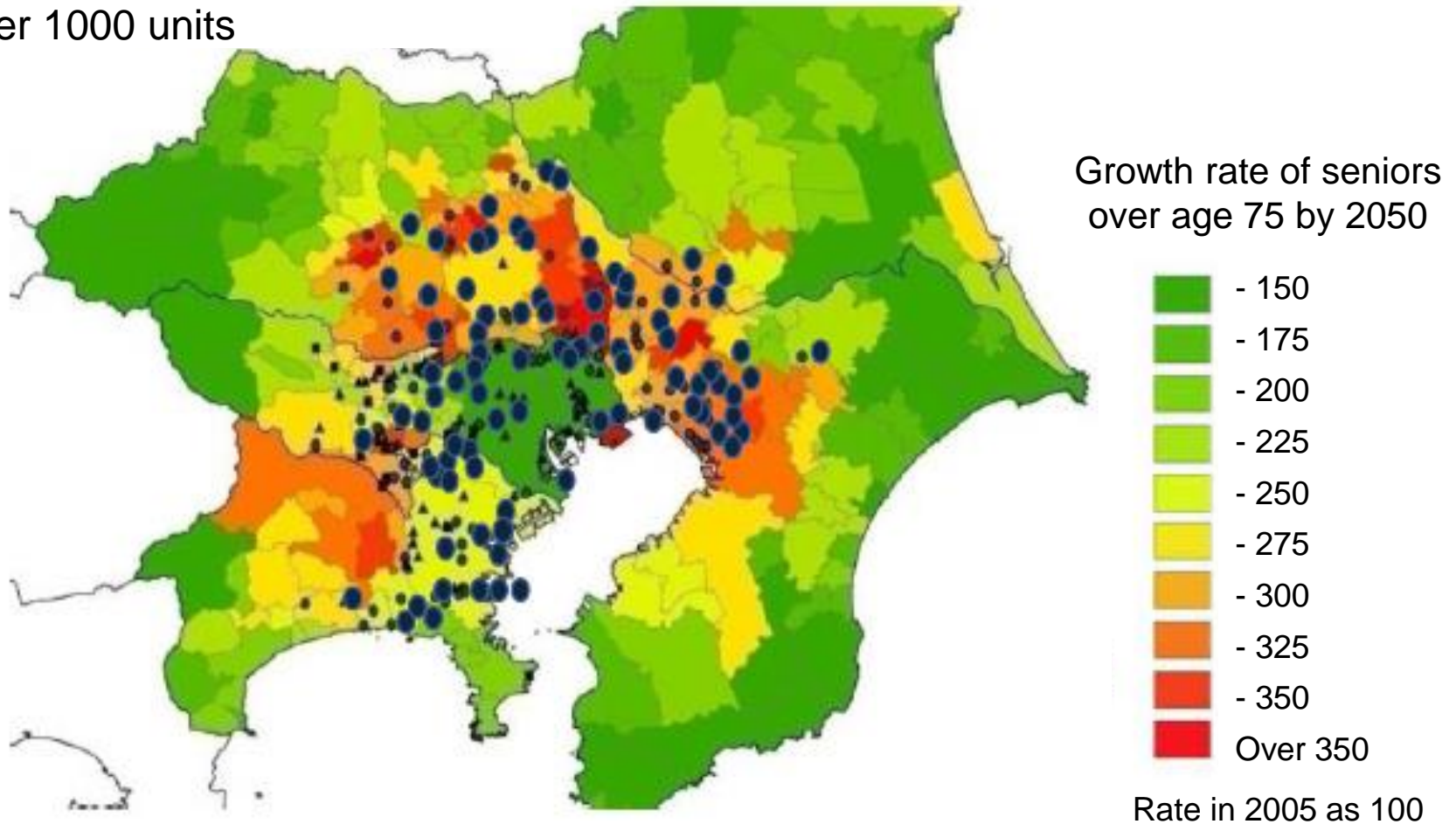


- 総人口は、今後しばらくは増加を続けるものの、2020年の1,336万人をピークに減少に転じ、2060年には1,036万人となる。（2010年に比べ約2割減少）
- 高齢者人口は、2040年には404万となる。（2010年に比べ139万人の増加）
- 2060年には生産年齢人口1.4人で1人の高齢者を支える。（2010年には3.3人で1人） 16

Aging and Shrinking population

Aging in large URA public housing estates in Tokyo M. A.

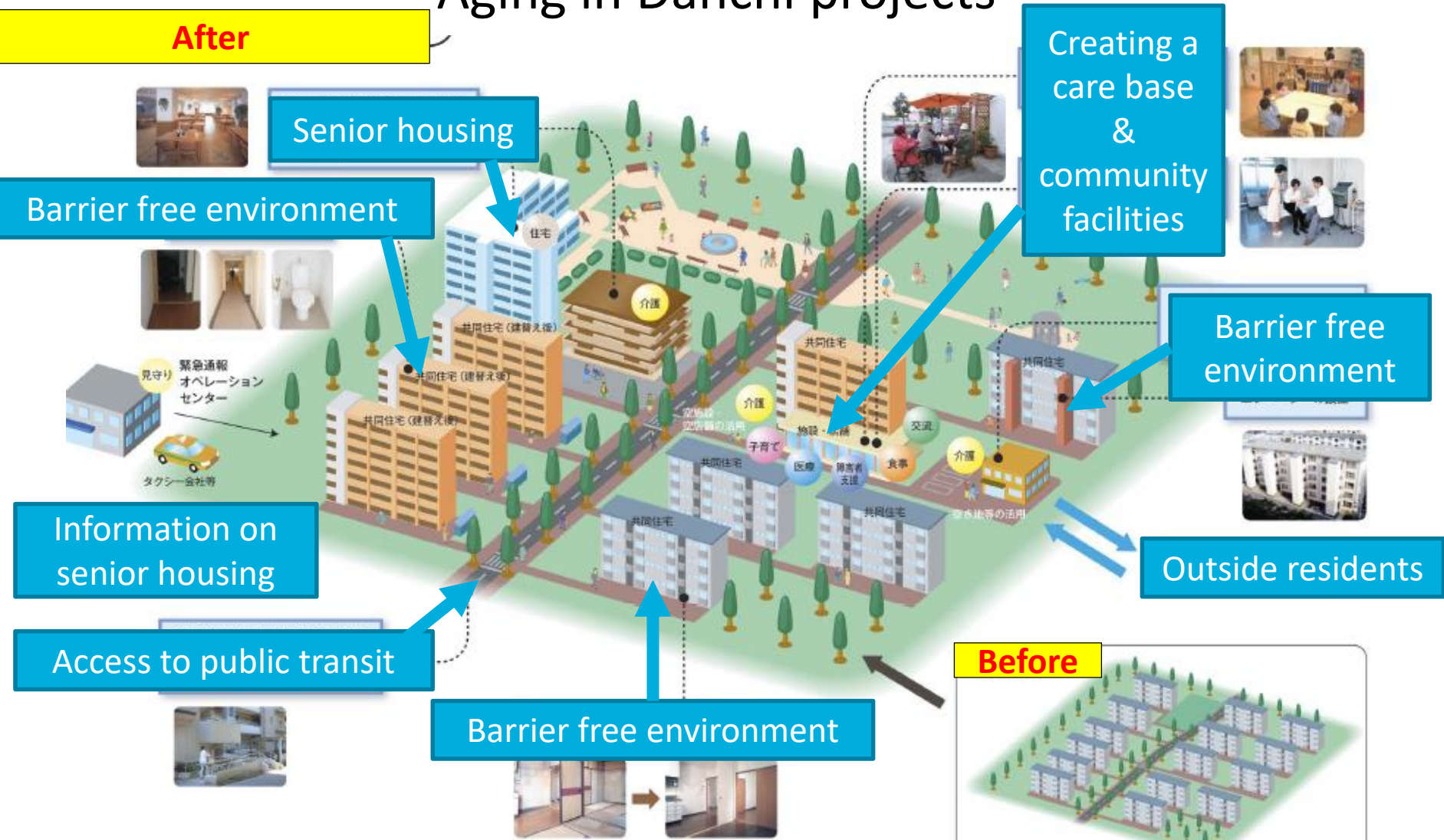
- URA Public housing estates with over 1000 units



Aging and Shrinking population

Aging in Danchi projects

After



creating senior-friendly housing by revitalization

Urban Issues in Tokyo

- **Aging and Shrinking population**
- **Disaster Prevention**
- **International Competition & Olympic Game 2020**
- **Energy and Environment**

Disaster Prevention

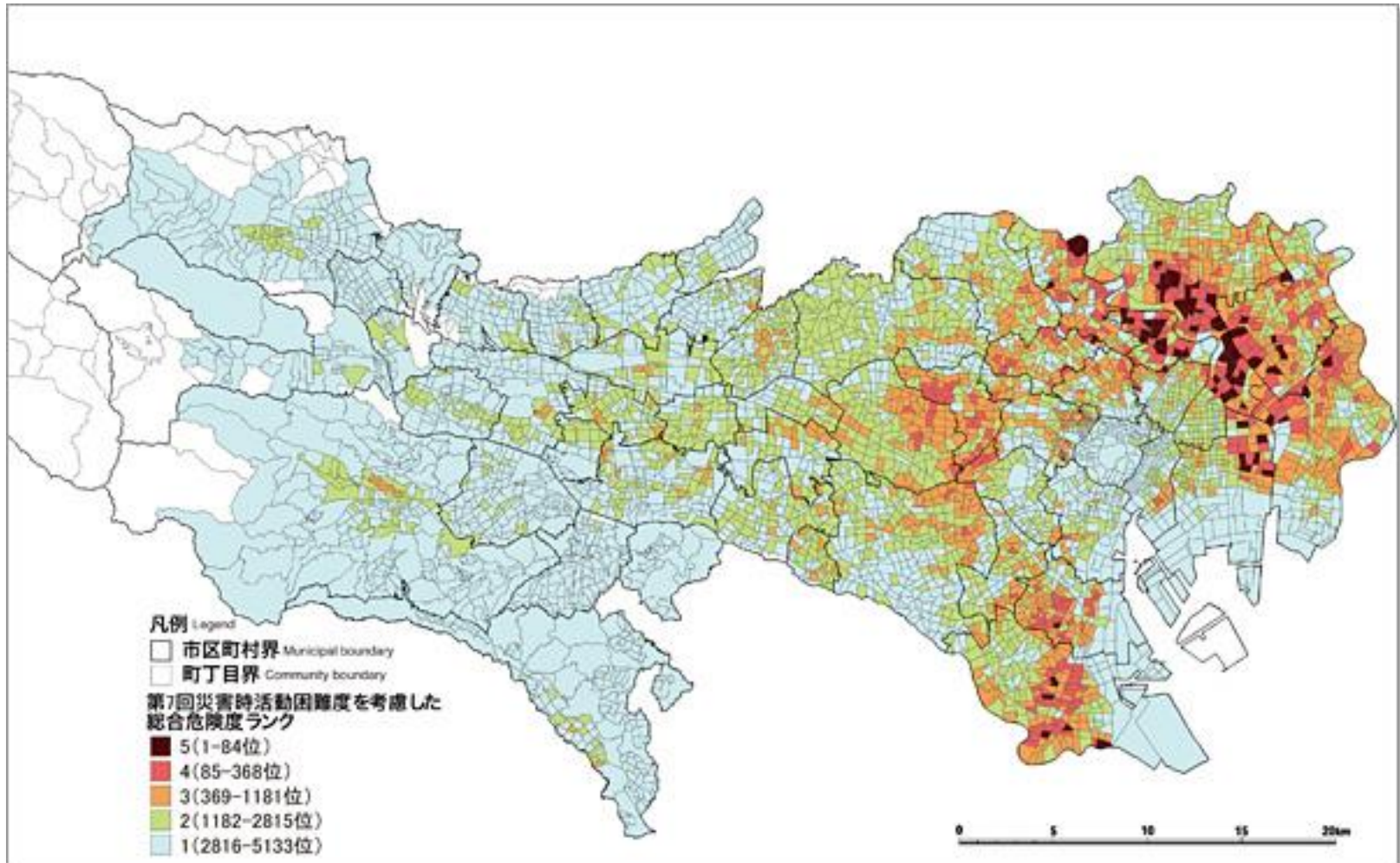
Earthquake center over M5.0 between 1994 and 2003



出典：内閣府HPに加筆

Disaster Prevention

Hazard Ranking Map



Disaster Prevention

Redevelopment in the wooden congested housing area

Before



After



Redevelopment project

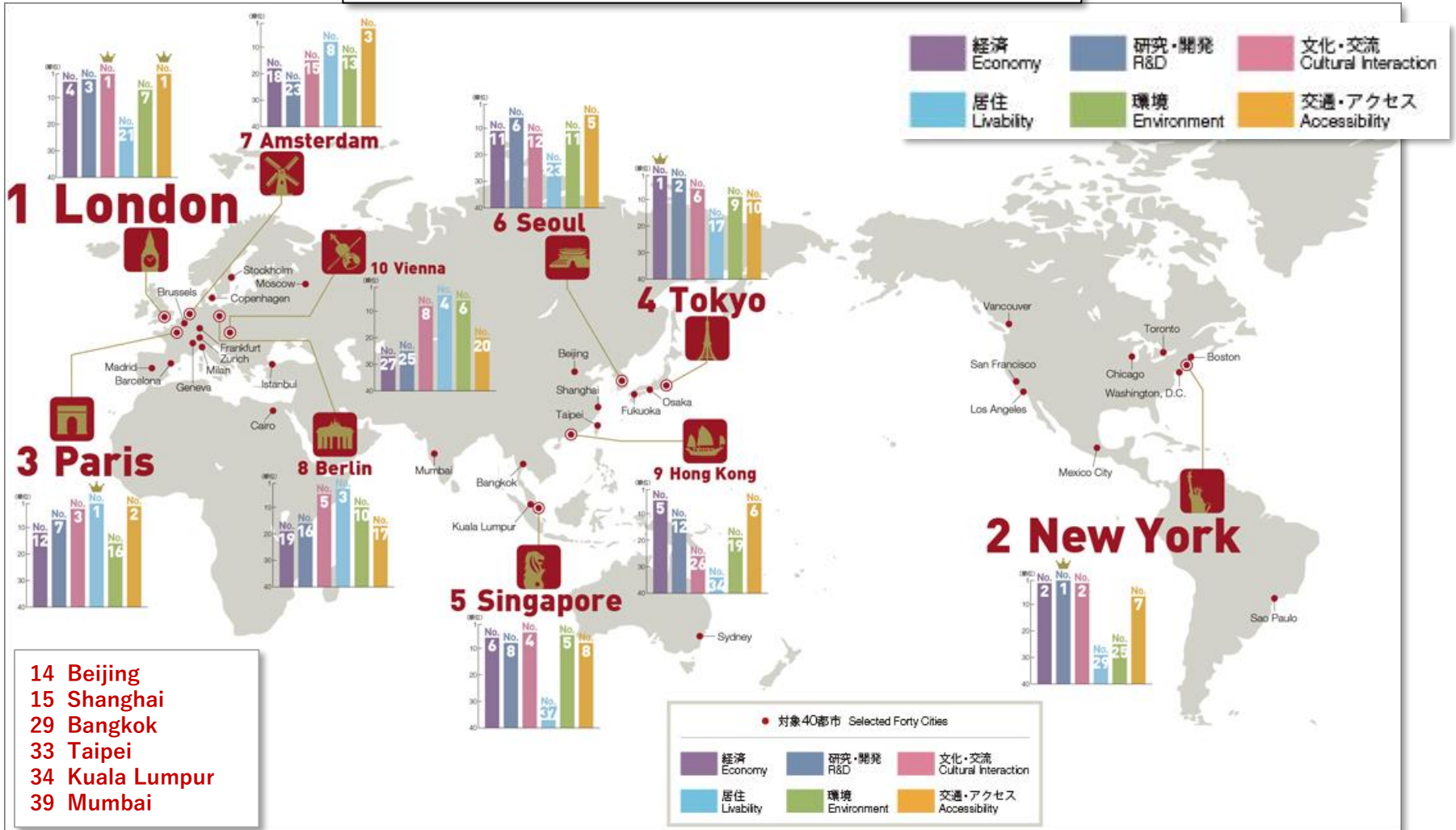


Urban Issues in Tokyo

- **Aging and Shrinking population**
- **Disaster Prevention**
- **International Competition & Olympic Game 2020**
- **Energy and Environment**

International Competition

Top 10 Cities by function 2014



Olympic Game 2020

2 Olympics in Tokyo

1 9 6 4



Postwar development for Tokyo to be a modernized city
Urban transportation developments, such as the super express railway, monorail and highways, were accelerated by the Olympic
Rapid economic growth society

2 0 2 0



Mature urban environment
Revitalizing Tokyo and making a new model city for new ara

Olympic Game 2020

2 Olympics in Tokyo

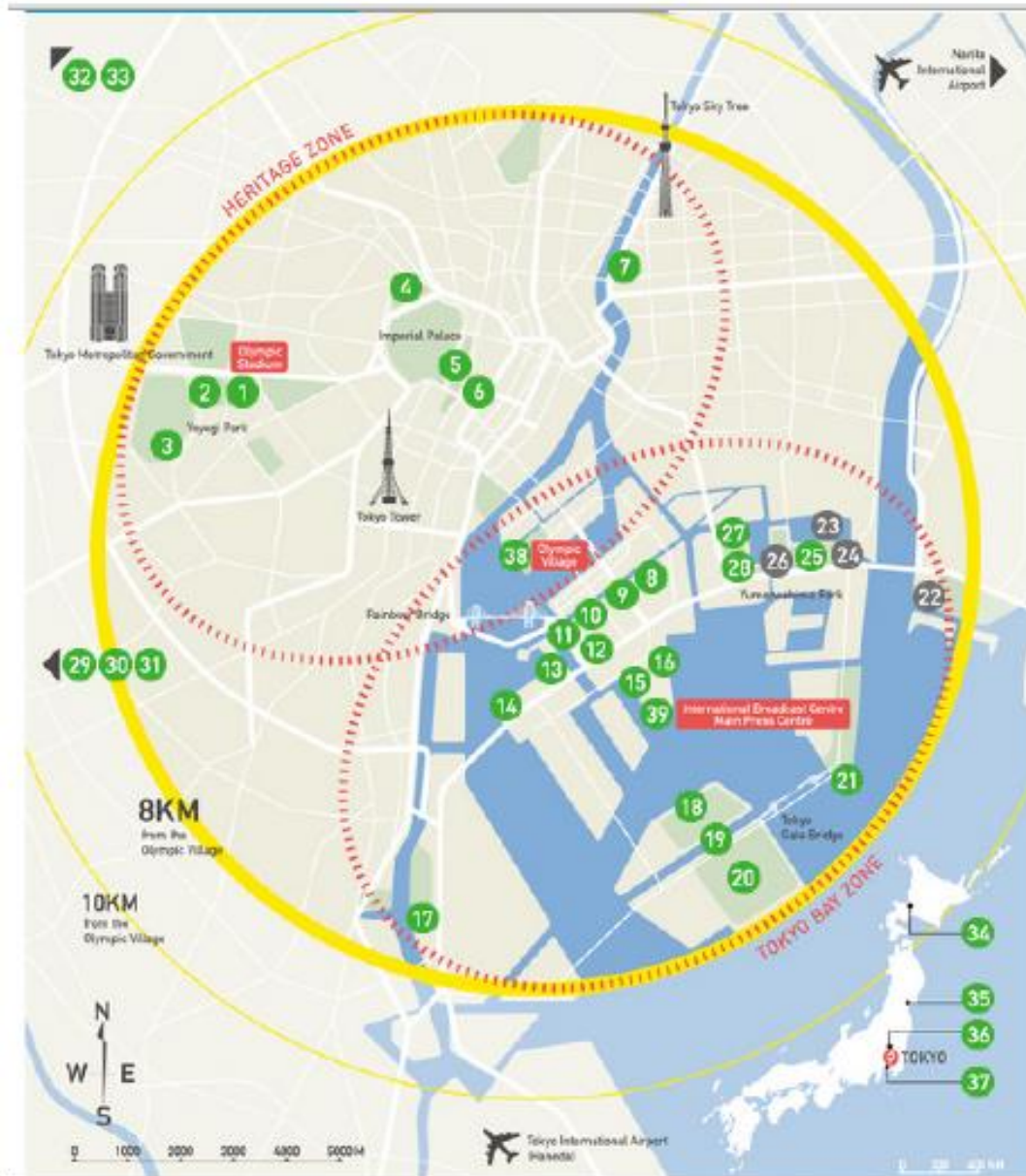
- Tokyo became a world megalopolis after the rapid growth and urban development after 1964 Olympic



- Tokyo focuses on keywords: Harmony with nature, Environment friendly, History and Culture, Livability etc



Olympic Game 2020

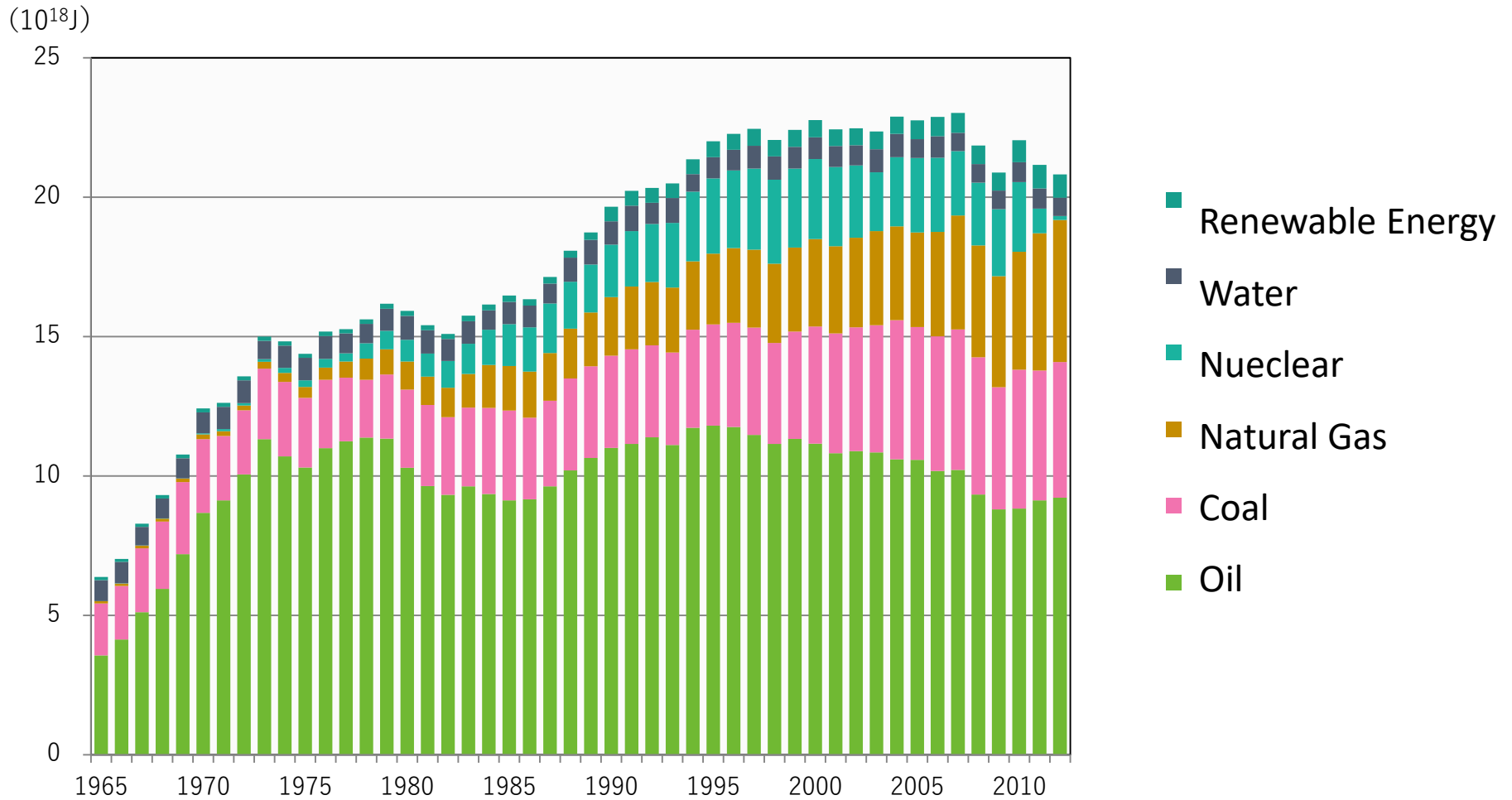


Urban Issues in Tokyo

- **Aging and Shrinking population**
- **Disaster Prevention**
- **International Competition & Olympic Game 2020**
- **Energy and Environment**

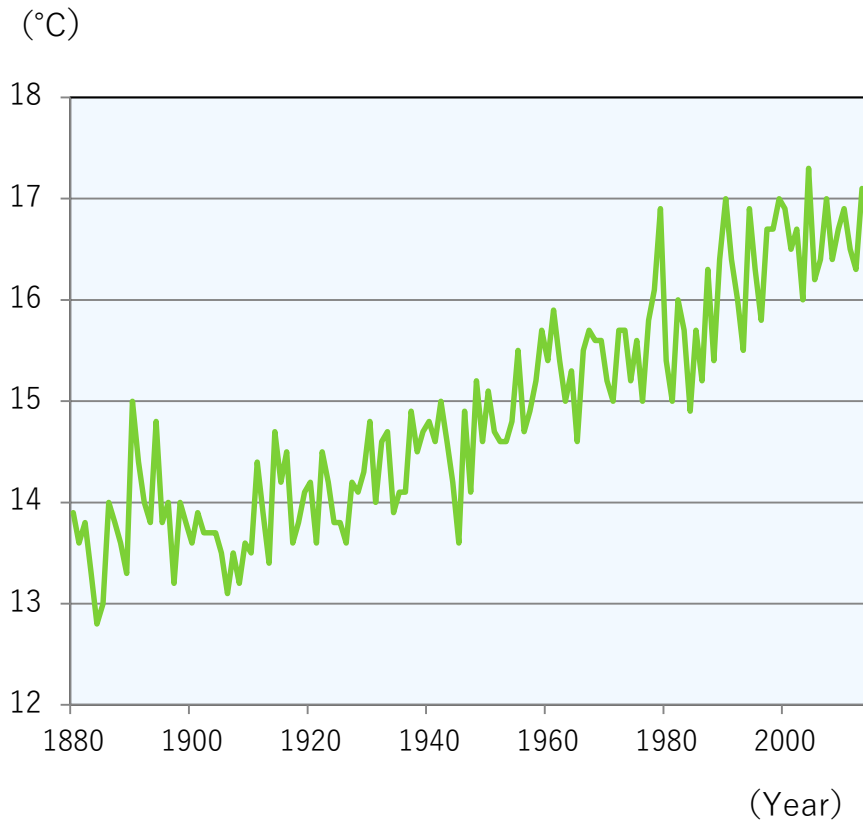
Energy and Environment

Energy Source of Japan

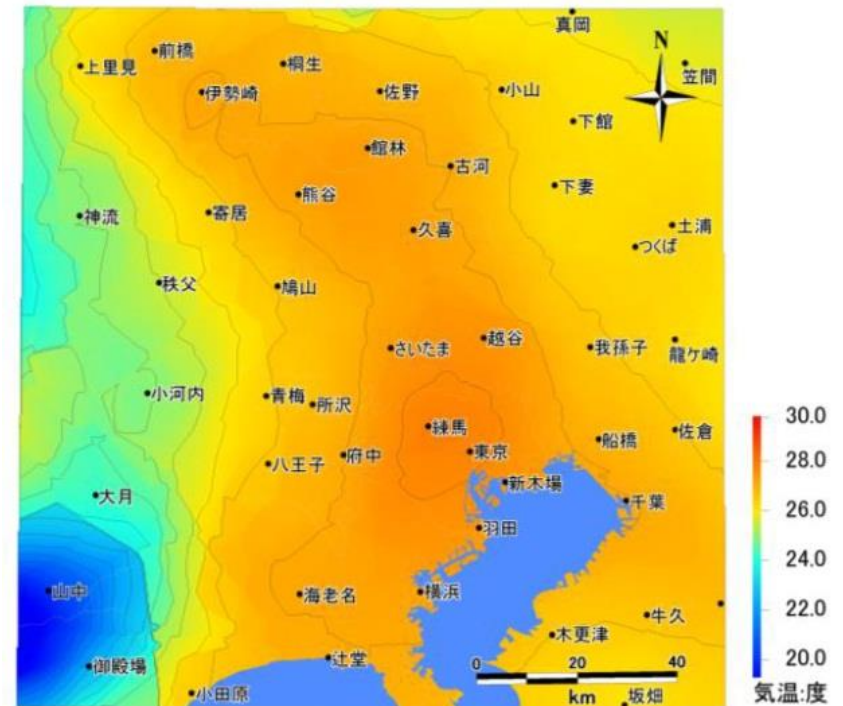


Energy and Environment

Average Temperature of Tokyo

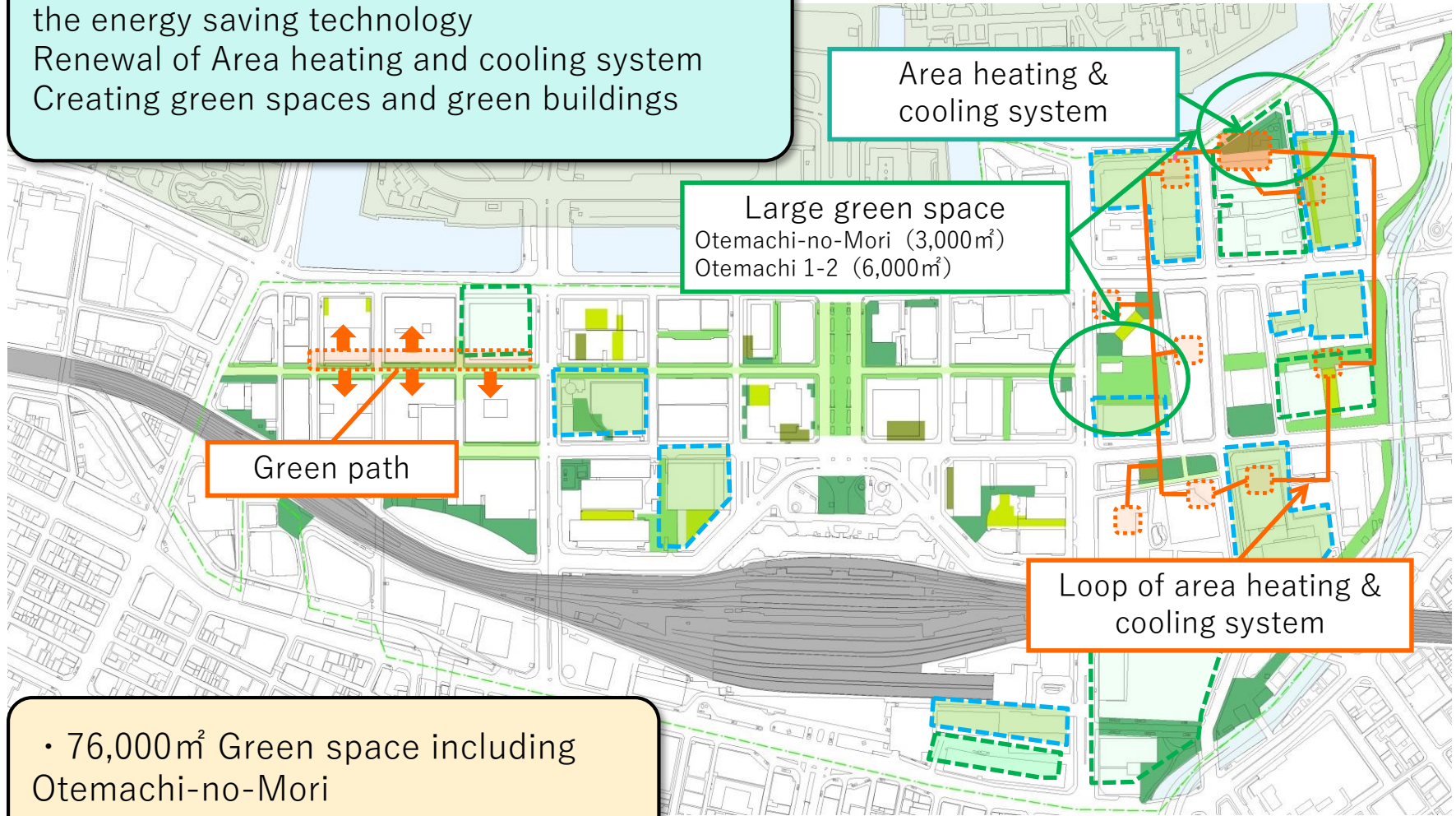


Average Temperature in August
In Tokyo Metropolitan area
(Average between 2006 and 2010)



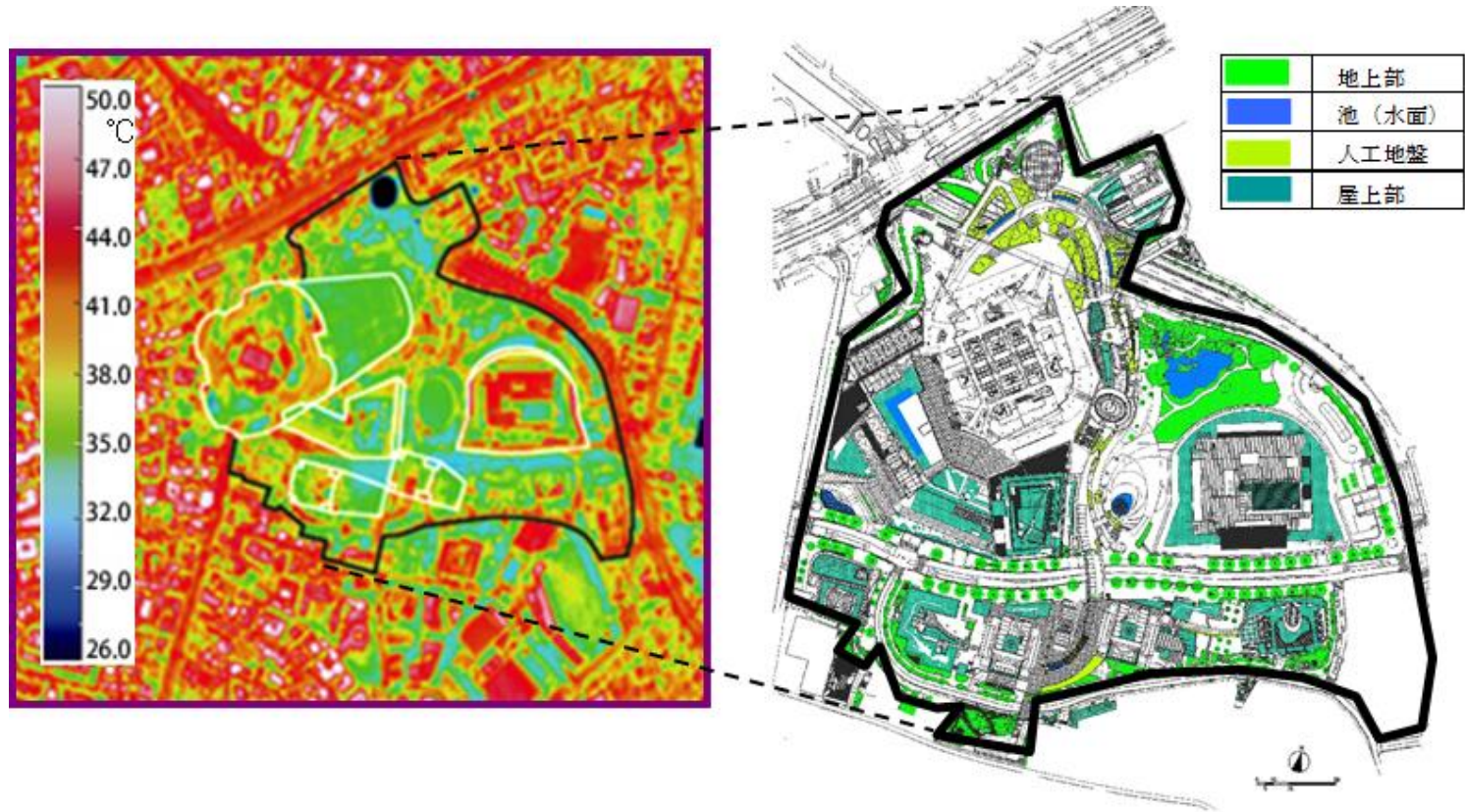
Energy and Environment

Aiming to reduce Co2 emission by introducing the energy saving technology
Renewal of Area heating and cooling system
Creating green spaces and green buildings



Energy and Environment

Incentive system for constructing green buildings and developments:
Developers can build bigger buildings if they create certain amount of green space



■ : 3ha of green space (25% of site area)

Temperature decreased by creating 3 ha green space in the redevelopment project
Average temperature in summer is cooler by 2-3°C than surrounding area

Aging and Shrinking population

- **Advantages of Aging in Danchi projects**
 1. High concentration of elderly residents
 - It is efficient and effective to build a care base
 2. Redevelopment enables to provide affordable lands for care bases and cover costs of revitalization
 3. Benefits of URA public housing resources
 - Green spaces and close-knit communities attract new residents

Aging and Shrinking population

Revitalization projects

Type		
Estate redevelopment		80 000
Total redevelopment	40 000	40 000
Partial redevelopment and renovation	40 000	20 000
Downsize and demolition	80 000	20 000
Stock utilization	570 000	---
Conversion	10 000	10 000
Ownership transfer	30 000	20 000

To create care bases for the elderly in 100 estates by 2020